



Engine Rebuilding Equipment

**Innovation  
Starts *HERE!***



## **RMC ETS-100 ENGINE TEST SYSTEM**

The **RMC-ETS100** is an accurate and dependable solution to systematically test and identify most common mechanical malfunctions encountered by engine builders, assuring your products will exceed your customers' expectations.

This new innovative design offers complete freedom to customize the operator digital control panel with manual and fully automated testing programs, utilizing the latest electronics, sensors and controls to collect pertinent data for input to the onboard computer and output to the screen, USB or Network locations for analysis or printing.

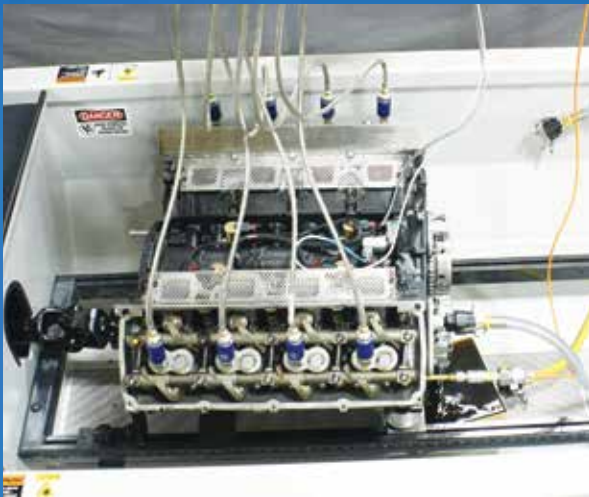
*Dedicated to serving your engine rebuilding equipment needs, since 1957*



FULL 15" DIGITAL TOUCH SCREEN

## INSTRUMENTATION WITH GRAPHICAL GAUGES AND BUTTONS

- Full 15" LCD Digital touch screen for ease of set up for monitoring testing functions.
- Temperature, filter condition and flow monitored on screen.
- Crankshaft rotation angle graph displayed on screen.
- Movable Control panel allows operation of the machine from the right or left hand side.



EASY ACCESS WORK AREA

## SAFETY & VISIBILITY

- Extremely fast loading with adjustable block cradles and four-point clamping.
- Two 30" x 20" removable Lexan safety guards provide safe operation during all testing cycles.

## TESTING CAPABILITIES (In Suggested Order)

- Vacuum Test of coolant system for potential leak down. (No Crankshaft Rotation)
- Pre-Torque Test for pre-lubing and checking oil flows to all components, unbalanced noises, loose components.
- Torque Test for crankshaft loads looking for improper fit of most moving components.
- Run-In Test for checking oil pressure (PSI) and flow (GPM) utilizing heated filtered oil also excessive leakage and missing plugs.
- Compression Test-reads all cylinders (PSI) to the screen as Pass/Fail with a Retest option on each cylinder.

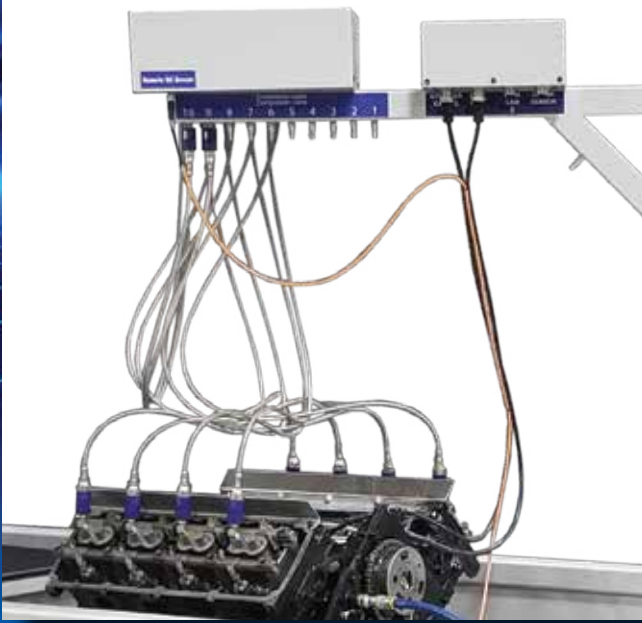


QUICK ATTACH DRIVE SYSTEM

## POWER DRIVE SYSTEM

- Infinitely variable speed, reversible, constancy torque drive motor system. Digital motor drive delivers accurate linear torque/load reporting for all rpm ranges.
- A heavy duty telescoping drive shaft with quick connect coupler to the universal crankshaft adaptor provides easy setup.

# AVAILABLE OPTIONS



**8 (Opt. 10) COMPRESSION CONNECTIONS** Quickly connect and test up to 10 cylinders at the same time for efficient, automated and accurate compression test results.

## BAR CODE SCANNER

Allows you to scan and keep the most accurate information about the engines you are rebuilding.



**ACTIVE FUEL MANAGEMENT TESTING (DoD, MDS, AFM)** (5.7L Hemi shown) is an effective way to test whether the cylinders are deactivating properly.



## REMOTE OIL PAN

Works great for testing the engines actual oil pump to detect improper functioning oil system.



## NEED TO TEST DIESEL ENGINES?

RMC has your total diesel testing solution...  
Diesel build equipped with 15HP motor.



Remote oil pressure sensor is used in conjunction with the remote oil pan to verify the actual oil pressure being produced at set RPM.

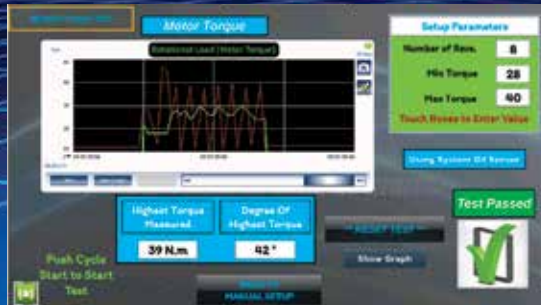




Test Results



Run In Screen



Torque Test Screen



Compression Test Screen

### RMC ETS-100 SPECIFICATIONS

Model number	ETS-100 (54 Inch)	ETS-100 (65 Inch)
Machine Weight	1500 Lbs/659 Kg	1780 Lbs/807 Kg
Main Drive Motor	7.5 HP	7.5 HP
Voltage	208 – 240 VAC	208 – 240 VAC
Phase	3 Phase, 3-wire	3 Phase, 3-wire
Cycle	60 Hz	60 Hz
Amps	45 FLA	45 FLA
Oil Capacity	10 Gallons/37.8 Liter	13 Gallons/49.2 Liter
Air Pressure	110 PSI @ 5 CFM	110 PSI @ 5 CFM
Floor Space Recommended	150" x 90"/3810 mm x 2286 mm	160" x 90"/4064 mm x 2286 mm
Shipping Weight	1900 Lbs/862 Kg	2180 Lbs/989 Kg
Shipping Size	96" L x 54" W x 52" H	111" L x 54" W x 53" H
<b>PERFORMANCE</b>		
Test Engine Max weight	1,200 Lbs	1,200 Lbs
Test Engine Max Length	45 Inches	53 Inches
Test Engine Max Width	30 Inches	30 Inches
Test Engine Max Height	40 Inches	40 Inches
Max Test RPM	300 RPM	300 RPM
Max Compression Level	500 Lbs	500 Lbs
Max Vacuum	20 Hg	20 Hg
Oil Tank Temperature	100-110 F	100-110 F
Max Oil Flow	6 GPM	6 GPM
Max Oil Pressure	60 Lbs	60 Lbs



US & Canada 800.248.5062  
 5775 Bridgeview Center | Saginaw, MI 48604  
 Phone: 989.754.3611 | Fax: 989.754.1696  
[www.rmcequipment.com](http://www.rmcequipment.com)

*In order to bring you the most advanced features as soon as possible, all features, descriptions and technical specifications are subject to change*